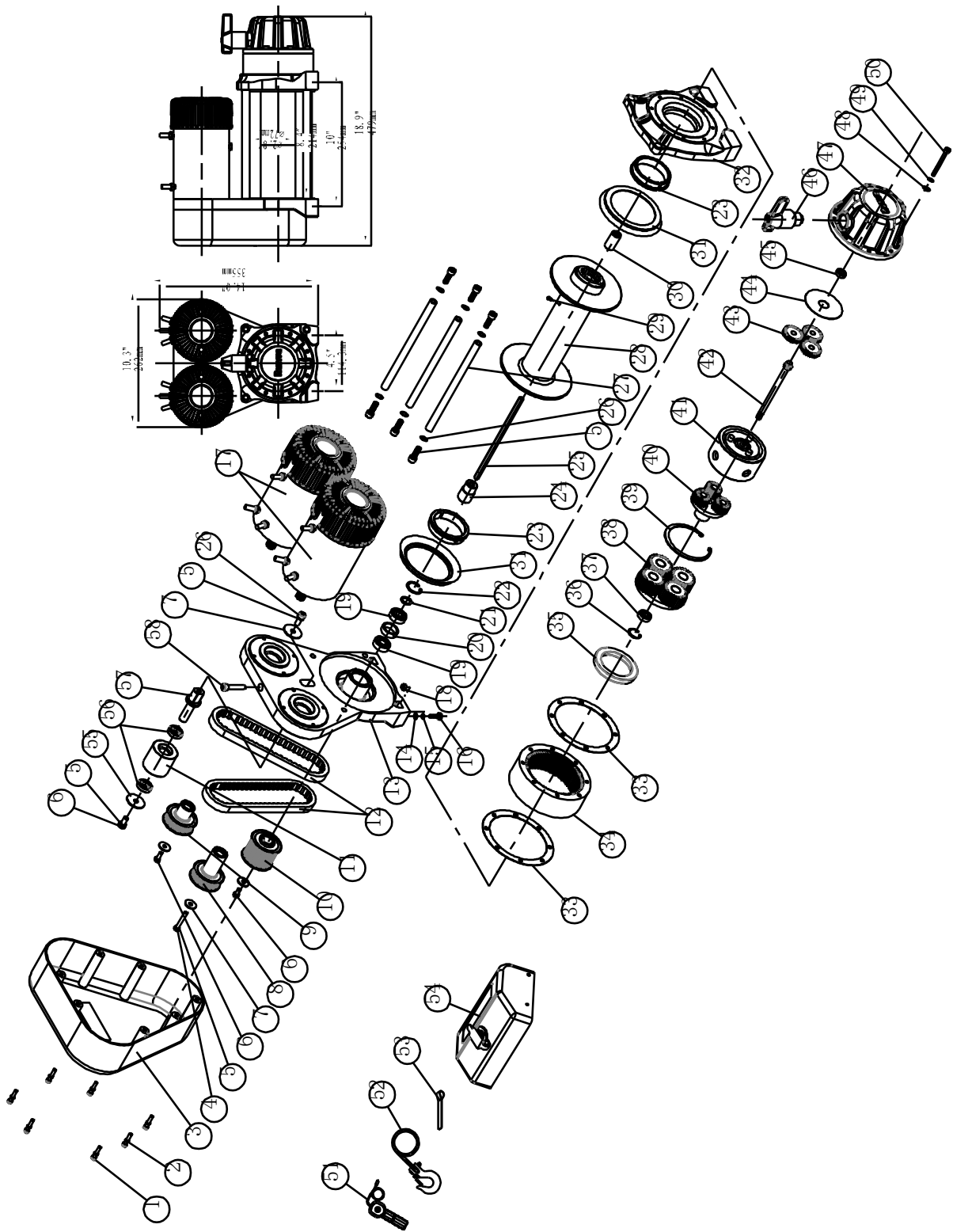




Predator Winch Assembly Drawing



WINCH PARTS LIST

No.	Part #	Qty	Description	Remark
1	S1000001	7	Screw M5x 12	
2	S1000002	7	Lock Washer Φ5	
3	S1000003	1	Shell	

4	S1000004	1	Screw M8x50	
5	S1000005	11	Lock Washer Φ8	
6	S1000006	3	Screw M8x 20	
7	S1000007	4	Flat Washer I	
8	S1000008	1	Pulley II	
9	S1000009	1	Pulley III	
10	S1000010	1	Pulley I	
11	S1000011	1	Tensioning Pulley	
12	S1000012	2	Belt	
13	S1000013	1	Motor Bracket	
14	S1000014	4	Thin Flat Washer Φ10	
15	S1000015	4	Lock Washer Φ10	
16	S1000016	4	Cap Screw M10 x 35	
17	S1000100	2	Motor Assembly	
18	S1000017	4	Hex Nut M10	
19	S1000018	2	Bearing	
20	S1000019	1	Spacer	
21	S1000020	1	Circlip For Hole	
22	S1000021	1	Circlip For Hole	
23	S1000022	2	Bushing-Drum	
24	S1000023	1	Coupling	
25	S1000024	1	Six Angle Bar	
26	S1000025	7	Screw M8 x 25	
27	S1000026	3	Tie Bar	
28	S1000200	1	Drum Assembly	
29	S1000027	1	Screw M8x10	
30	S1000028	1	Coupling	
31	S1000029	2	Ring Seals	
32	S1000030	1	End Bearing	
33	S1000031	2	Gasket	
34	S1000032	1	Gear—Ring	
35	S1000033	1	Ring Seals	
36	S1000034	1	Circlip For Hole	
37	S1000035	1	Bearing	
38	S1000300	1	Gear Carrier Assembly (Output)	
39	S1000036	1	Circlip For Hole	
40	S1000400	1	Gear Carrier Assembly (Intermediate)	
41	S1000500	1	Brake/ Shaft Assembly	
42	S1000037	1	Gear—Input Sun	
43	S1000038	3	Planetary Gear	
44	S1000039	1	Trust Washer	
45	S1000040	1	Bearing	
46	S1000600	1	Clutch Assembly	
47	S1000041	1	Gear—Housing	
48	S1000042	8	Thin Flat Washer Φ6	
49	S1000043	8	Lock Washer Φ6	
50	S1000044	8	Screw M6x 70	
51	S1000700	1	Remote Control Switch(RC8)	
52	S1000800	1	Cable Assembly	
53	S1000045	1	Strap	
54	S1000900	1	Control Section	
55	S1000046	1	Flat Washer II	
56	S1000047	2	Bearing	
57	S1000048	1	Tensioned Pine	
58	S1000049	1	Screw M8x 40	